

ATELIER
BRISAC

distinct identity

ATELIER
BRISAC

uplifting places

ATELIER
BRISAC

luminous spaces

ATELIER
BRISAC

places that benefit everyone

Profile

Atelier Brisac creates places of outstanding spatial clarity.

We are an international award-winning architectural practice with experience in France, the UK and Scandinavia.

We find simple solutions to complex briefs. We create luminous spaces with refined materials, which we believe should benefit everyone regardless of budget.

We operate both in the public and private sectors, focusing on cultural, sports and leisure, education, social housing, mixed-use and residential projects.

Our strength is to develop projects that combine architectural and urban qualities and enrich the site they are located in. We are passionate about the craft of building and we choose materials that are elegant, sustainable and robust.

Our approach is rigorous. We pride ourselves on fruitful and close collaboration with our clients, who trust us to create places that enhance the experience and life of their users.

Atelier Brisac was founded in London and in Paris by Cécile Brisac in 2019. A graduate from the Architectural Association School of Architecture in London, Cécile previously co-founded Brisac Gonzalez which she co-directed for over 20 years.

Lot O4A, Ecodistrict Clichy Batignolles – Paris

Client Paris Habitat

Summary Mixed-use public building including 144 social housing units (housing block on the park by Antoine Regnault), a 15-classroom primary school, a regional level sports centre, a retail unit and parking facilities.

Project Value € 37.3 million

Area 16 747 m²

Date Completed 2019

Architect Brisac Gonzalez

Awards WAN Awards 2019 - Gold in 'Mixed use Projects' category
Surface Design Awards 2020 'Social Housing' category - Finalist

The building stands as a moment of respite within the busy, dense surroundings of the Eco District 'ZAC Clichy Batignolles', and aims to extend the park into the city.

This is achieved by stacking the three components of the brief, and splitting the towering volumes, creating a defined yet open corner. Light floods into the block and shines on the south-facing landscaped roof terrace. The result is quality of living spaces, basked in sunlight, with balconies wrapped around all sides.

Inside, each entity stands out on its own, a sense of place being paramount for residents and children in their formative years. The sports centre circulation remains bare, with light concrete and steel columns, while each activity room presents a distinct identity: a warm and dazzling copper toned dance room, a deep turquoise sports hall, and a textured but solemn martial arts room. The school uses soft and natural tones. Light wooden panels clad the walls of the circulation spaces, where floors are tiled with a gradient of tans and yellows.

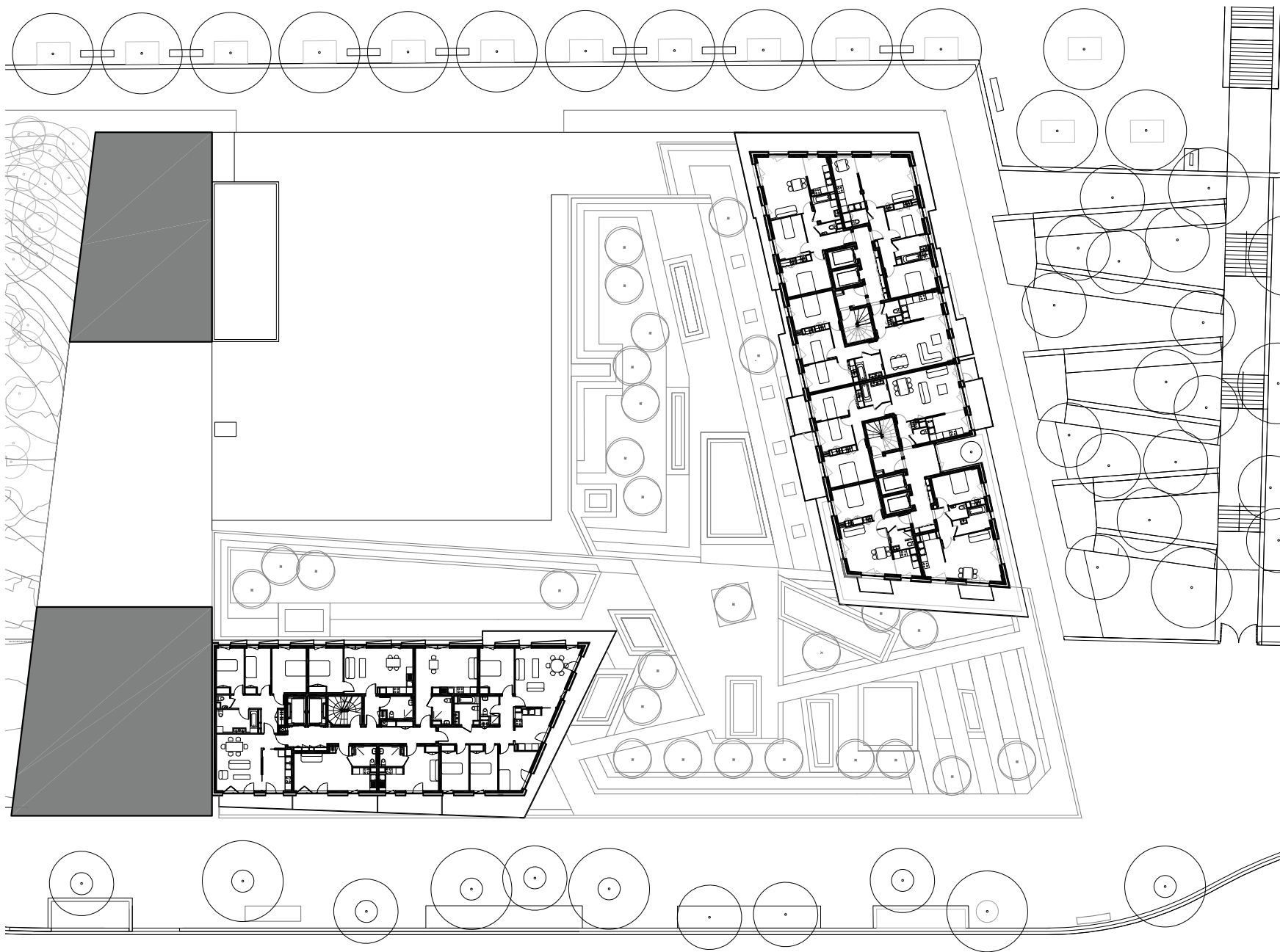
Throughout, light is guided across the various rooms, piercing through hallways and shimmering along surfaces, creating a sense of brightness and airiness.









































Allée du Parc, Vilgénis – Massy, France

Client Emerige

Summary 137 apartments, including 4 Live-work units, 4 retail units and nursery

Project Value € 17.6 million

Area 11 153 m²

Date Completed 2022

Architect Atelier Brisac

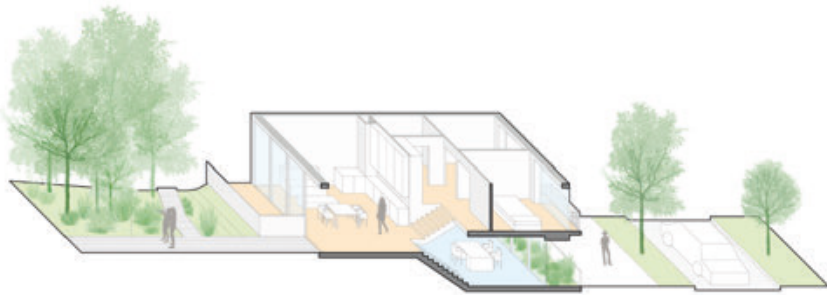
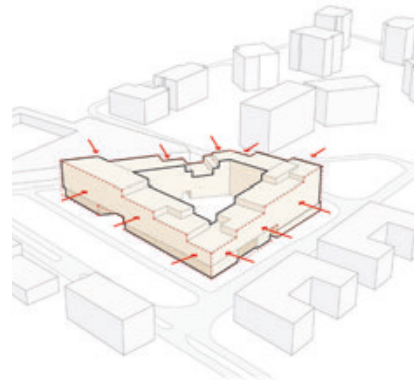
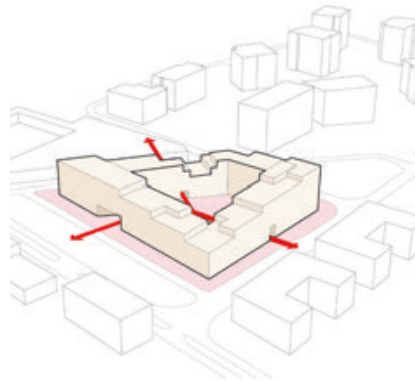
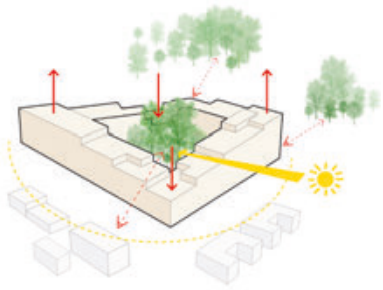
Situated on the edge of a leafy estate in the Bièvre Valley outside Paris, the mixed-used building displays an atypical urban vision between city and countryside.

Its city-block morphology gives the entrance to the new Vilgénis neighbourhood a distinctive urban nature. With a strict constraint of four storeys maximum, the building's varying heights play visually with the incline of the street and transform its rooftops into habitable terraces, shared or private.

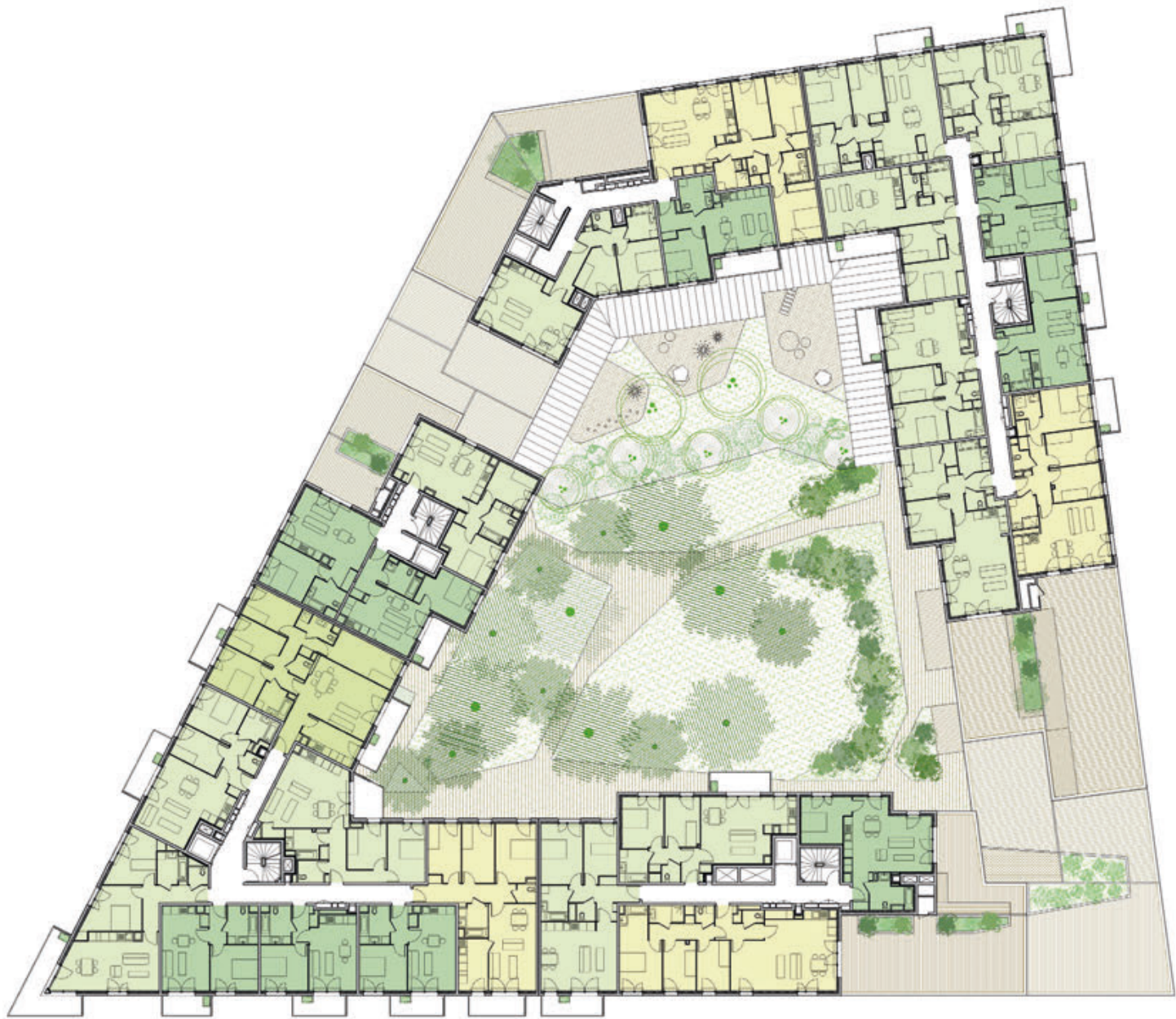
Light penetrates the heart of the complex thanks to strategically raised or dropped corners, which also protect its inhabitants from prevailing winds. With an architectural expression of great simplicity using horizontal lines, its form allows for quality housing surrounding a large garden. The ground floor at street level bustles with activity.

The natural environment of the site is disturbed only by the ring-shape of the building. In the vast planted garden in its centre, an impression of microcosm prevails. The transition between city and nature is enhanced by greenery along the periphery of the building at ground level, and with three large openings in the façade granting direct access to the garden from the street.













nestenn
A VINDING
IN DE WERELD

Pajol Sports Centre – Paris

Client Ville de Paris

Summary Sports Centre comprising a main sports hall, a martial arts studio, fitness facilities and a youth centre

Project Value € 8.8 million

Area 4 060 m²

Date Completed 2012

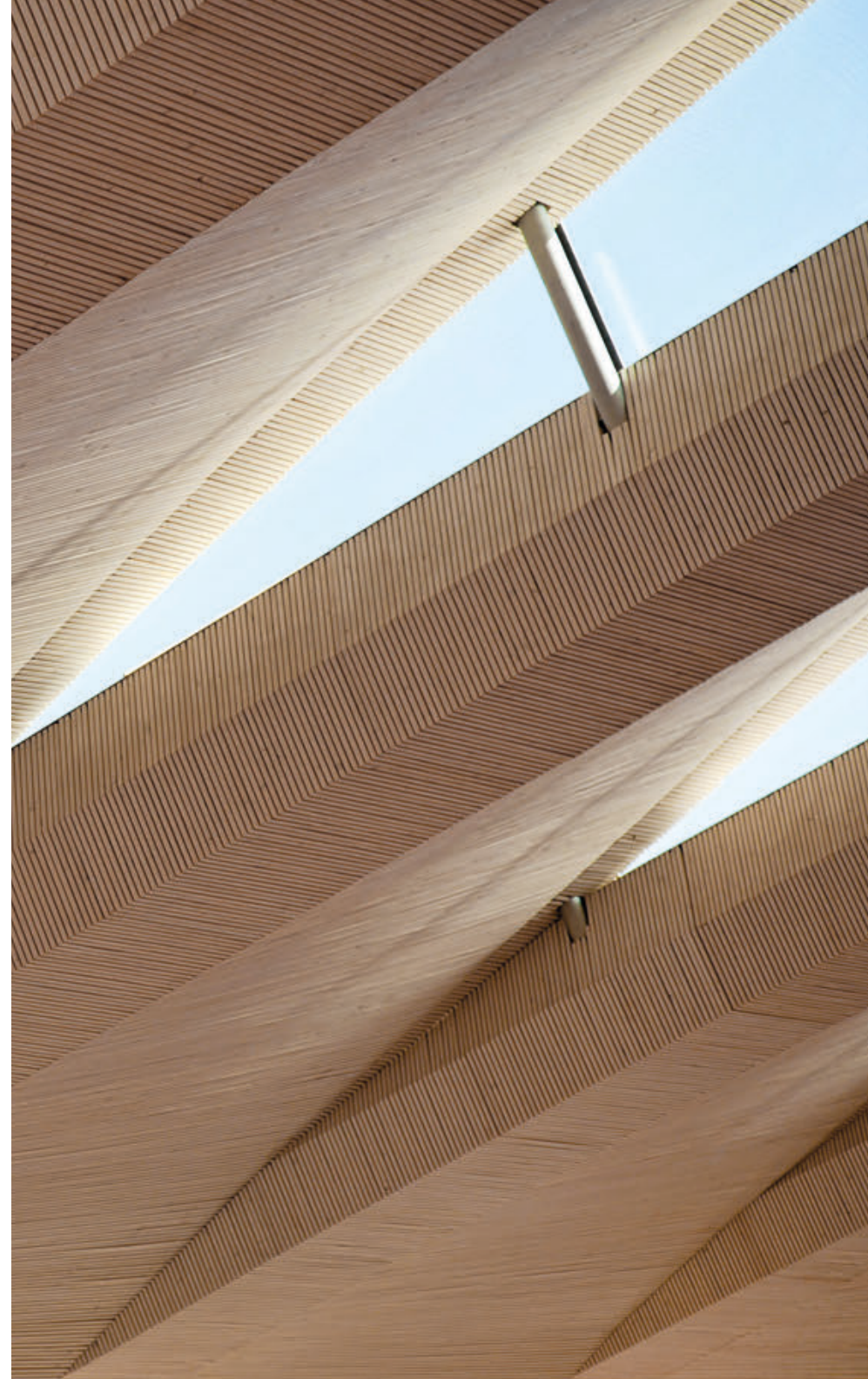
Architect Brisac Gonzalez

Awards Georges De Hens Prize 2014, Royal Academy of Sciences, Letters, and Fine Arts of Belgium - Category: Fine Arts Class

Pajol Sports Centre is a new facility in Paris' 18th arrondissement. Arranged over three levels, the building is formed of two opaque volumes at lower ground and upper levels, which sandwich a transparent public space at entry level.

The lower ground accommodates the martial arts and fitness centres. The 47 by 24 metre sports hall is located on the upper level to take advantage of even natural daylighting via a series of north-facing sculpted roof lights. On the entry level, the building opens onto a large terrace along the eastern façade.

With the use of natural daylight, natural ventilation and photovoltaic panels the centre requires minimum energy and incorporates renewable materials. It has set the benchmark for a new environmental certification for sports centres in France.















Grand Equipement Documentaire (GED), Condorcet Campus – Aubervilliers, France

Client Région Ile-de-France

Summary University Library and Postgraduate Research Centre

Project Value € 56 million

Area 23 000 m²

Date Competition 2014

Architect Brisac Gonzalez

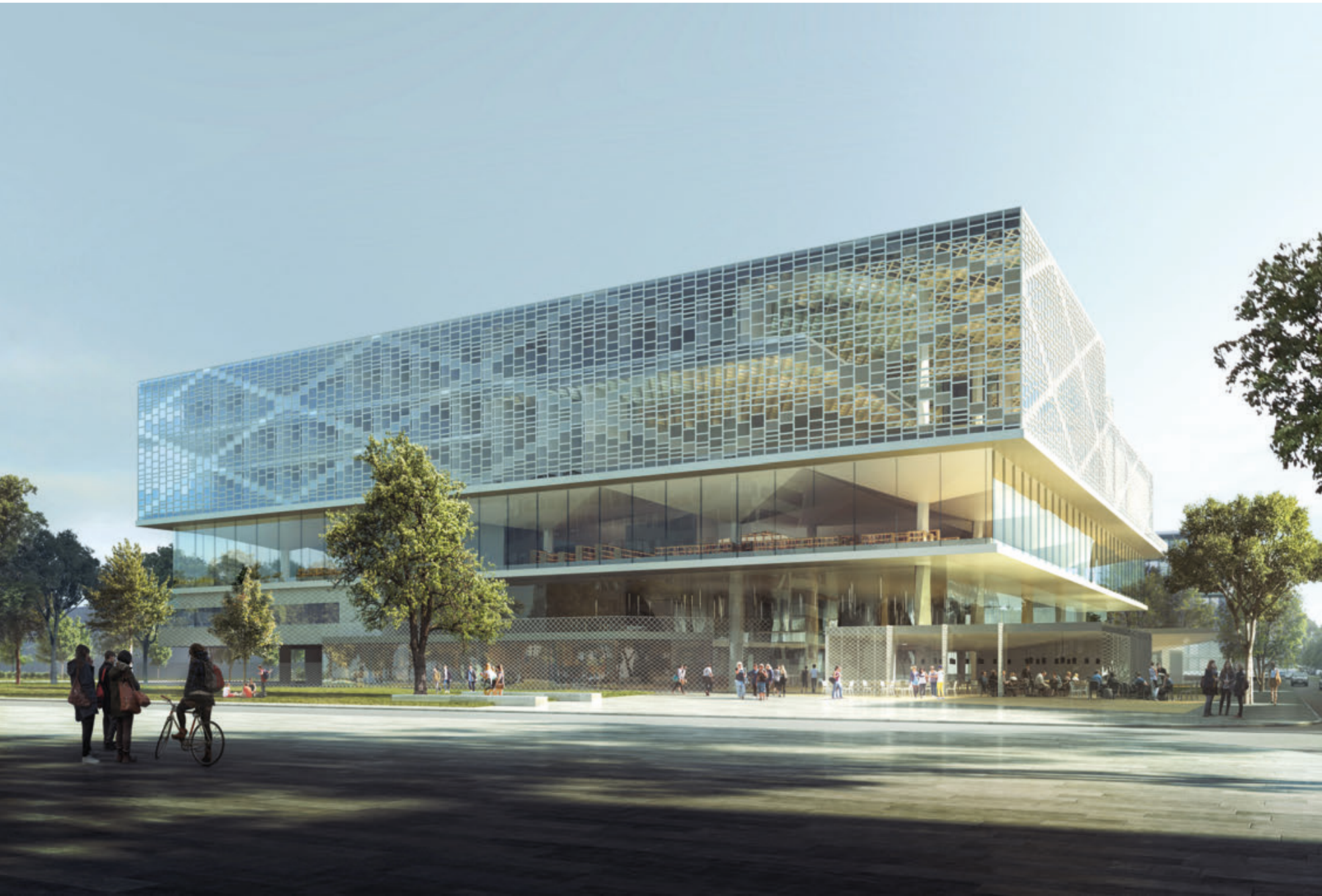
Structuring the heart of the campus, the Grand Equipement Documentaire (GED) will become a major focal point of animation in the Condorcet Campus area, its district, and the entire city.

The catalogs of 45 libraries specialized in human and social sciences will be open to all the institutions on Campus, scholars, and the public. The building will offer a consultation space with a capacity of 1432 seats, some logistic spaces including archives and reserves, a forum, a café, a bookstore, and public gardens. Some exhibitions will be open to the public, and workspaces will be available for students and residents.

Standing iconic at the heart of the campus with its façade patterned like a beehive, the library fits easily into its urban context. The library space is elegantly fitted above a large traversing forum, the latter becoming the missing link between the courtyards and the reading gardens. Low volumes - street-side - carve out the straightness of the façade and give birth to converted terraces.

In this modern age of easy and free access to all materials, it was a challenge to avoid the shelving units overcrowding the reading spaces and obstructing the eye. This was achieved with a slight change of levels in the floor and high ceilings facilitating the diffusion of light. Each floor plan is conceived with evolution in mind; who knows what the future of books will be made of.







Le Prisme Concert Venue – Aurillac, France

Client Communauté d'Agglomération du Bassin d'Aurillac

Summary 4500-capacity multi-purpose hall for concerts, performances, trade fairs and sports events.

Project Value € 9.2 million

Area 5 265 m²

Date Completed 2007

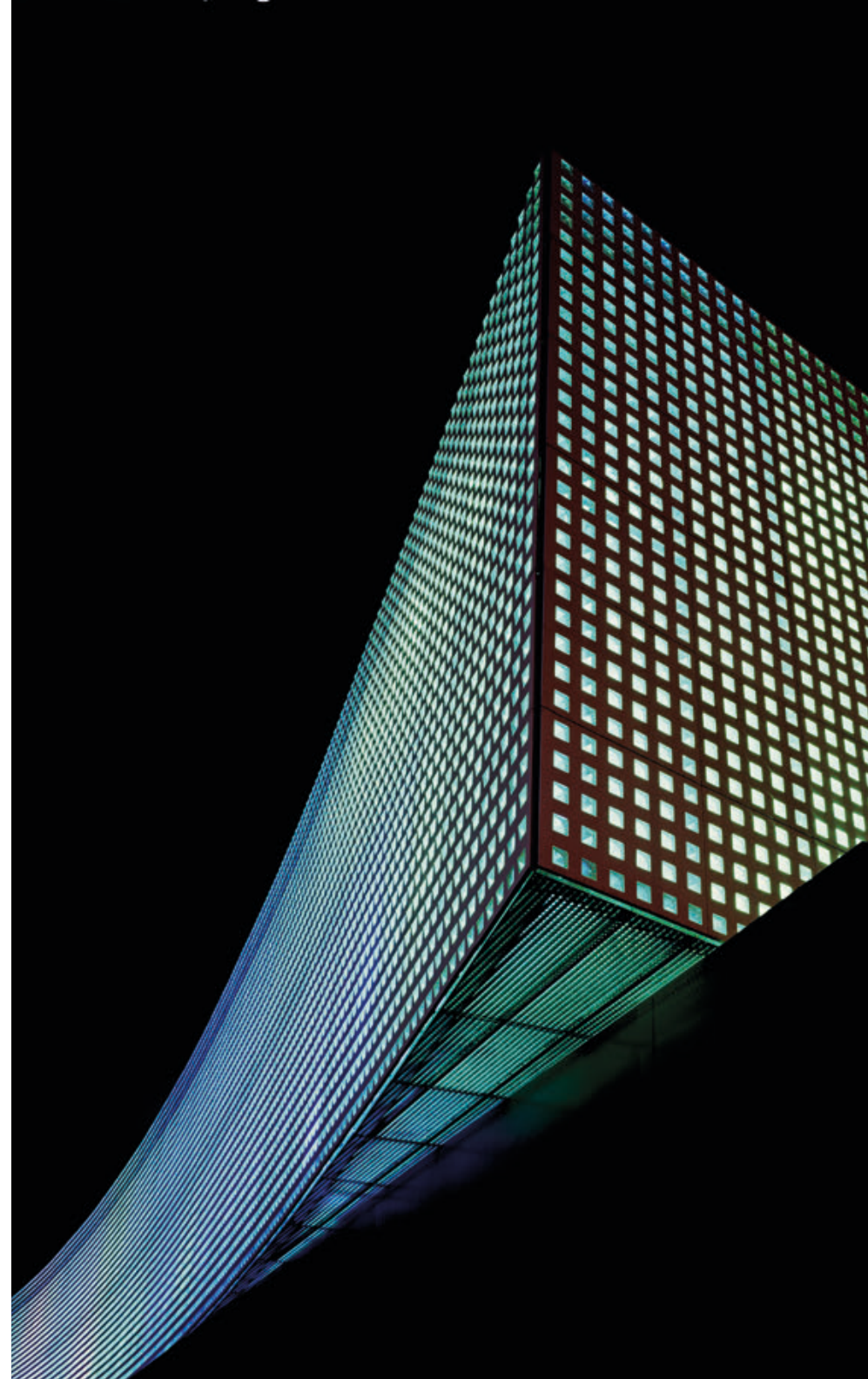
Architect Brisac Gonzalez

Awards Le Techno Prisme: Surface Design Awards 2015, 1st Prize Category "Public Building Exterior Surface"

The building serves as a new venue for theatre, concerts, trade fairs, and sports events. Equipped with retractable seating and a demountable stage for versatility, it caters to diverse activities.

As it is never permanently inhabited, the building essentially functions as a chamber for ephemeral events. Like stage scenery or a flamboyant costume, it is meant to be admired from afar, serving as an instantly recognizable landmark.

During the day, sunlight interacts with the 25,000 bespoke pyramidal-shaped glass bricks, creating glimmering effects and dramatic shadows. In the evening, the building comes alive as the Fresnel lens-like surfaces of the glass bricks amplify the intensity of the colored lighting scheme, resulting in a glittering facade









Hobhouse Court – London

Client Hobhouse SA

Summary Mixed-use building comprising 19 residential units, offices, retail, and an art gallery, within a listed John Nash site.

Area 6,600 m²

Date 2019

Architect Brisac Gonzalez & Arquitectonica

Env. BREEAM Excellent

Awards NLA Awards 2019 - mixed-use category: finalist

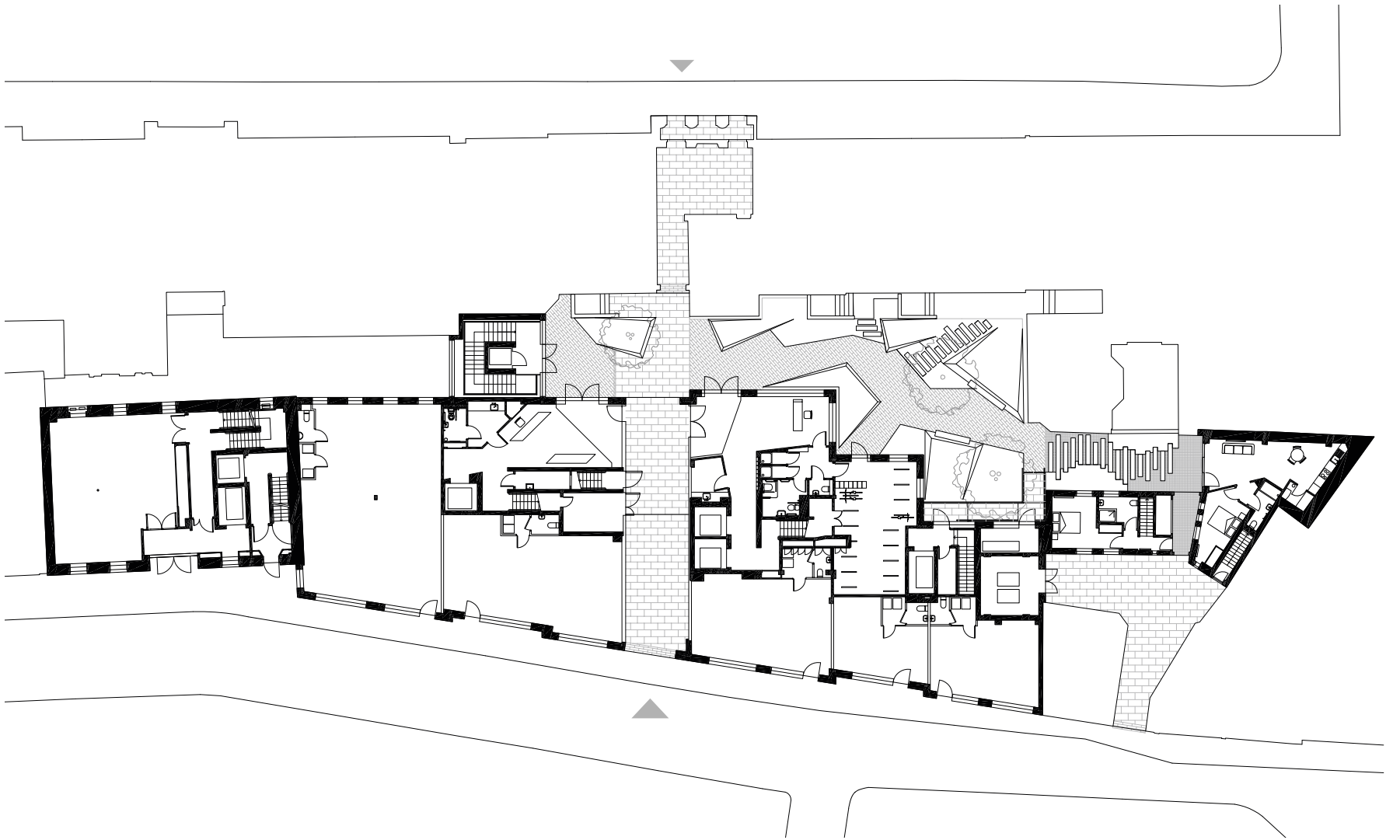
This subtle project is located within two protected districts: Trafalgar Square and St James's, and includes a listed building attributed to John Nash.

Located within a narrow street at the heart of a historical and sensitive area, the varied uses find their place around a calm interior garden.

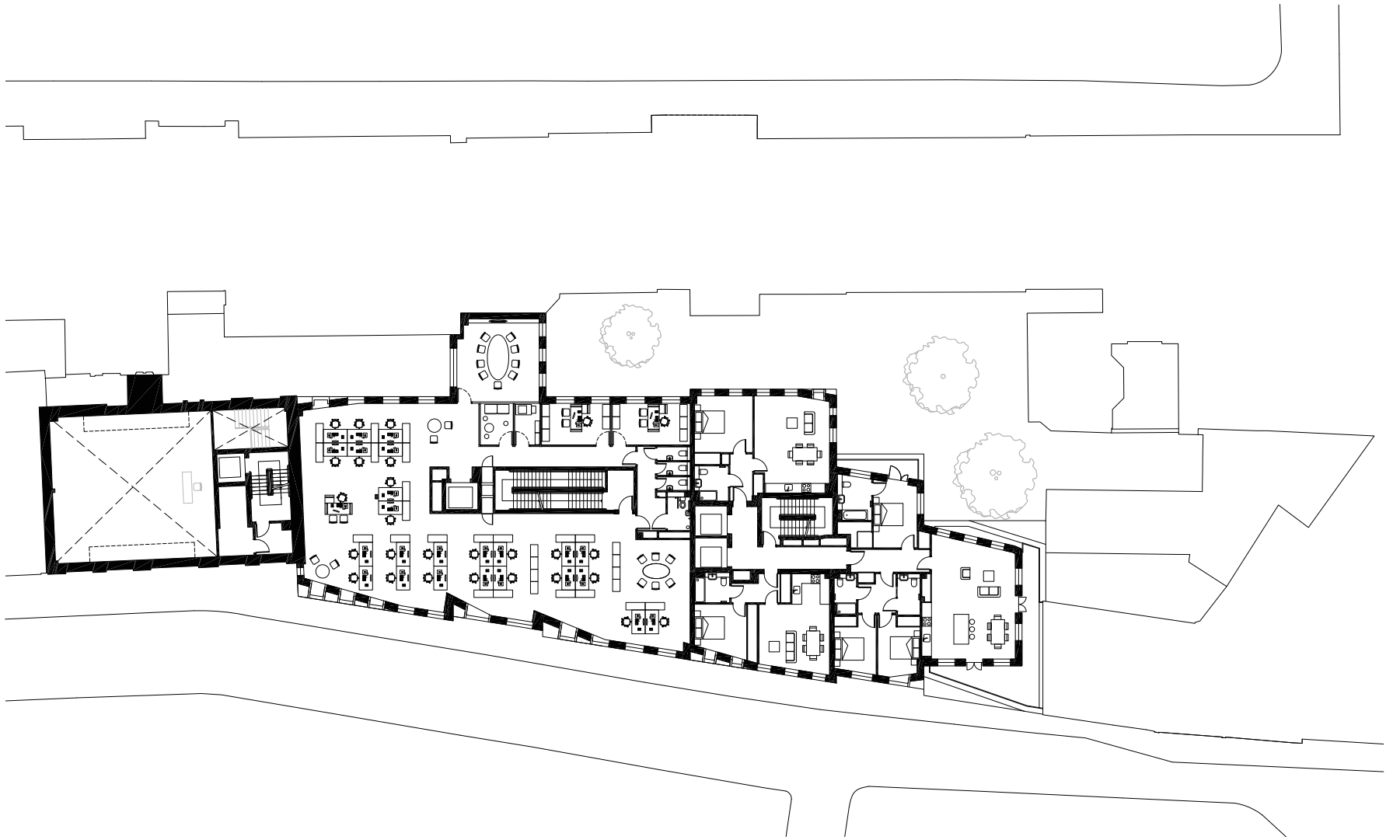
Listed vaults inform the structure and space, creating bright, flexible accommodation.

The building envelope subtly merges with the existing surroundings, adding a level of elegant detailing and setback at the upper level to afford light and views.













Museum of World Cultures Gothenburg, Sweden

Client SFV Statens Fastighetsverk
Swedish National property board – Ministry of Finance

Summary Major national museum including exhibition galleries,
research centre, library, 200-seat auditorium and restaurant

Project Value € 38.1 million

Area Completed 2004

Date 10 950 m²

Architect Brisac Gonzalez

Awards Kasper Salins Prize – Best new building in Sweden, 2004
European Union Prize for Contemporary Architecture
'Mies van der Rohe Award', 2005 - Selected
AIA / UK Chapter Excellence in Design Award, 2005
The Forum Prize, Stockholm, Sweden, 2005 - Nominee
International Prize 'Dedalo Minosse alla Committenza di
Architettura', Vicenza, Italy, 2006

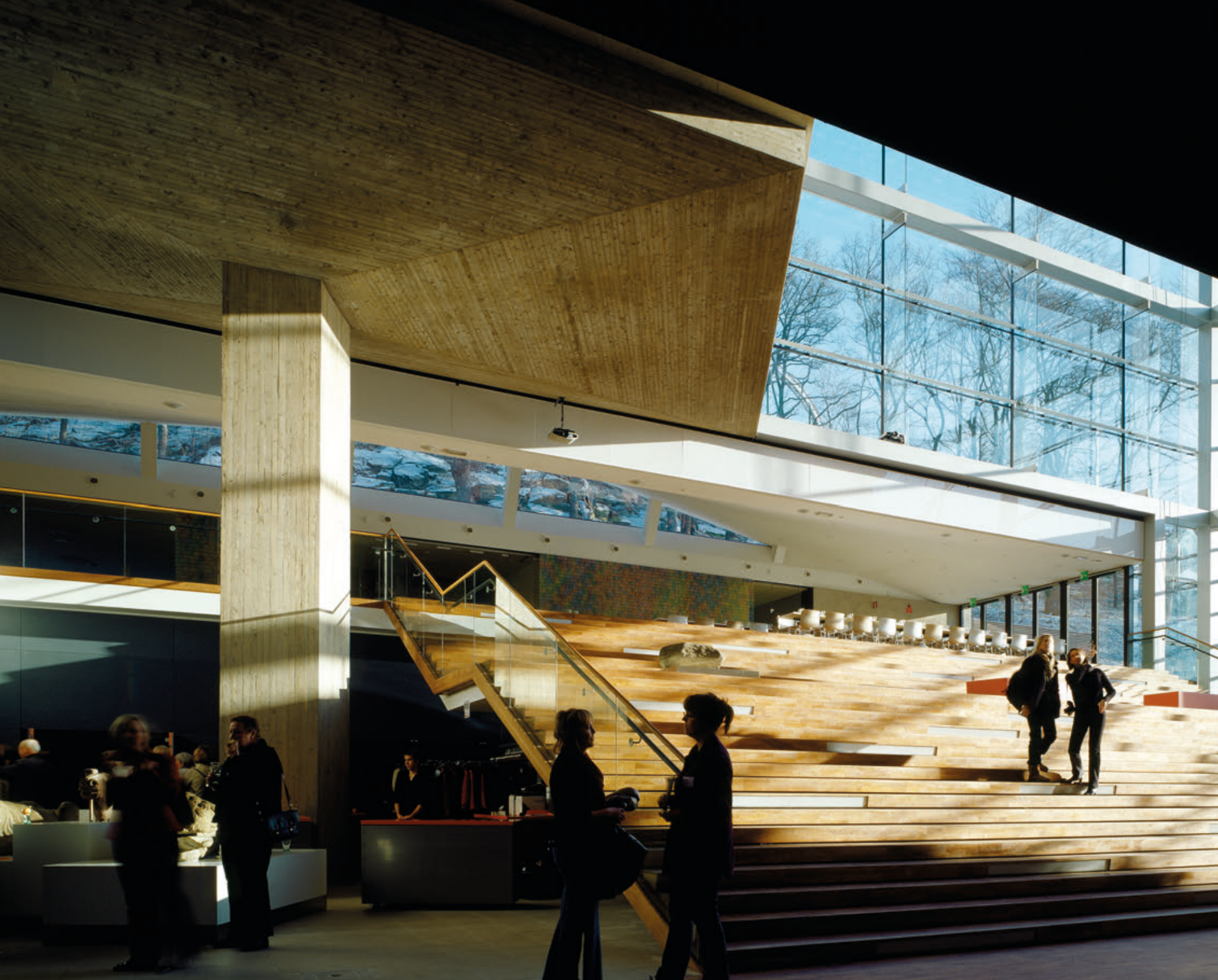
The museum provides a new public platform for the ethnographic collections of Sweden. It also serves as a new forum for international and local events. The site is situated at the foot of a hill in the city centre.

The design strategy revolved around creating a clearly marked difference between a solid west wing, containing the gallery spaces and offices along the street, and an open east wing towards the hill, where public activities take place.

Between the solid west and the open east is a canyon-like zone containing the building services, with public circulation weaving its way through the three areas. As one goes up the building, the elements which were seen from below are gradually perceived from above, creating a sequence of reference points throughout the building with alternating views of the hill, atrium and museum.



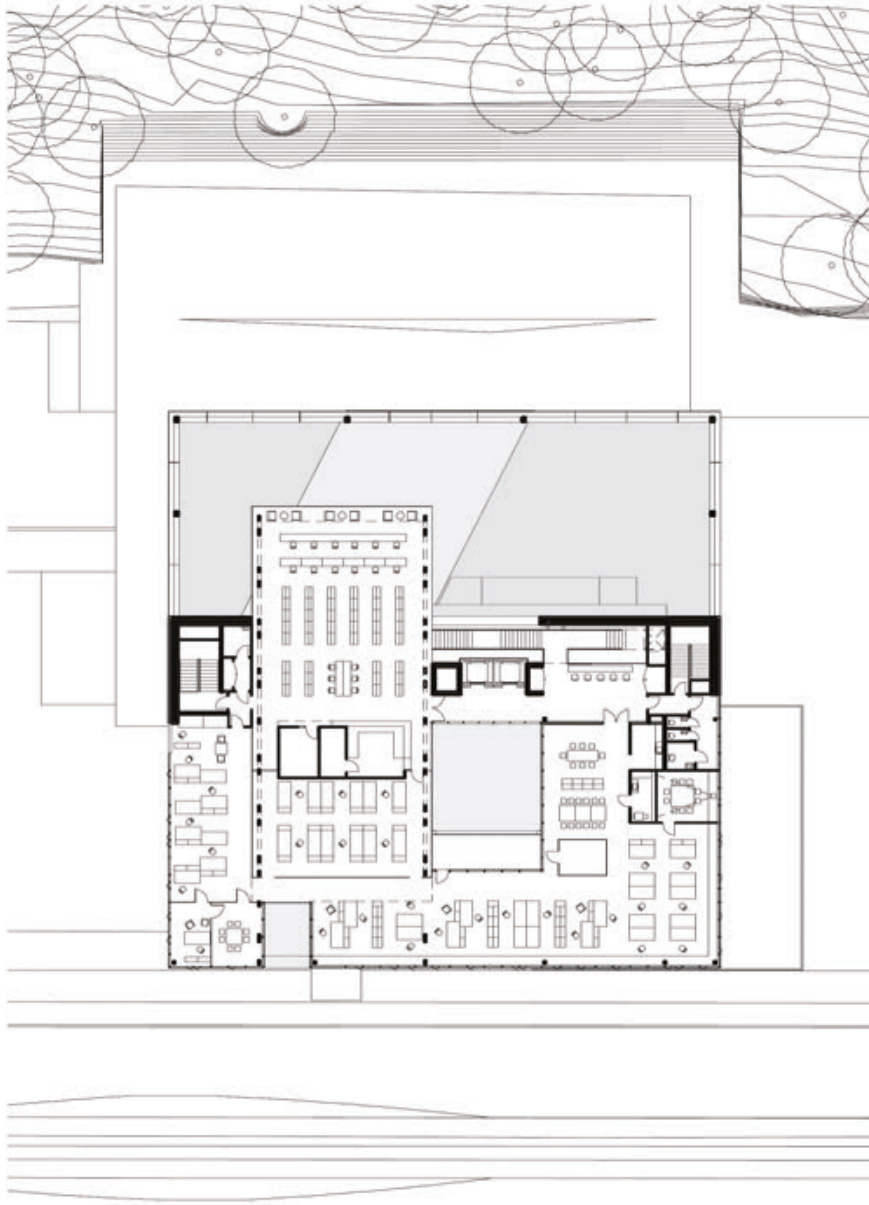
















Testimonials

Pauline Bravin, Project Manager, Paris Habitat

"Cécile led this particularly complex project with great tact and tenacity.

Cécile is someone with integrity; she is serious and impartial, aware of all topics, very open-minded, and attentive."

Jean-François Danon, Head of Architecture, City of Paris

"It is very easy to find one's way around these buildings, largely thanks to the natural light Cécile managed to bring in, which was not at all easy.

It is a clear, coherent architecture. There is a real sense of space, a lot of rigor without falling into severity. It is very elegant."



2024

ATELIER BRISAC Ltd
Registered England and Wales No. 12052576
+44 (0)20 3445 6092

ATELIER BRISAC SASU
Ordre des architectes Ile-de-France S21033
R.C.S. Paris 879 528 651
+33 (0)7 49 88 07 40

www.atelierbrisac.com
contact@atelierbrisac.com



@ atelierbrisac

